

1 Minimum system requirements

Operating system	64-bit version of: <ul style="list-style-type: none">▪ Windows 11 Pro / Enterprise▪ Windows 10 Pro / Enterprise▪ Windows Server 2022▪ Windows Server 2019▪ Windows Server 2016
RAM	8 GB
Hard disk space	Program: 1 GB Data: <ul style="list-style-type: none">▪ Minimum: 10 GB▪ Recommended: 50 GB
USB ports	for devices with USB interface
Screen	Minimum resolution: 1024 x 768
Network	10 Mbit/s, stable and permanent Communication via TCP/IP Safety systems, e.g. firewalls, have an impact on performance.
PDF reader	A PDF reader must be installed on the computer. The Windows user must have administrator rights in order to be able to install the StabNet software.

2 Customizing energy options

During the determination, data loss may occur or there may be communication problems with certain energy options of the operating system. Proceed as follows to customize the energy-saving plan settings:

- 1 Under **Control Panel ► System and Security ► Energy Options**, open the system settings that specify the behavior when the power switch is pressed or the computer is folded shut.

2 Change the following settings:

- **When pressing the power switch:** Do nothing
- **When pressing the energy saving button:** Do nothing
- **When closing the lid:** Do nothing
- **Enable fast start-up:** Deactivated



NOTICE

To change the **Turn on fast start-up** option, you may need to enable it first as an administrator. To do this, click on **Some settings are currently unavailable** in the window.

3 Open the energy-saving plan settings under **Control Panel ► System and Security ► Energy Options**. Now click on **Change advanced energy settings**.

4 Change the following settings:

- Under **Saving energy**:
 - **Deactivation after:** Never
 - **Allow hybrid standby mode:** Off
 - **Hibernate after:** Never
- Under **USB settings**:
 - **Selective USB energy-saving settings:** Disabled

5 If communication problems occur, proceed as follows:

Open the **Device manager** via the Windows start menu.

Maximize the **USB controller** entry.

Open the context menu of the USB controller used with the right mouse button. Disable the **Computer can switch off the device to save energy** option under **Properties ► Energy management**.

If it is not known which USB controller is used, then adjust the properties of all USB controllers.

3 Single workplace installation

With the single workplace version **StabNet Full**, you can install the client and the database on your computer.

1 Prior to the installation, disconnect all the USB devices from the computer on which **StabNet** is to be installed.

If the OMNIS Software is already installed on the computer, exit the **Metrohm OMNIS DeviceServer** service via the Windows Task Manager.

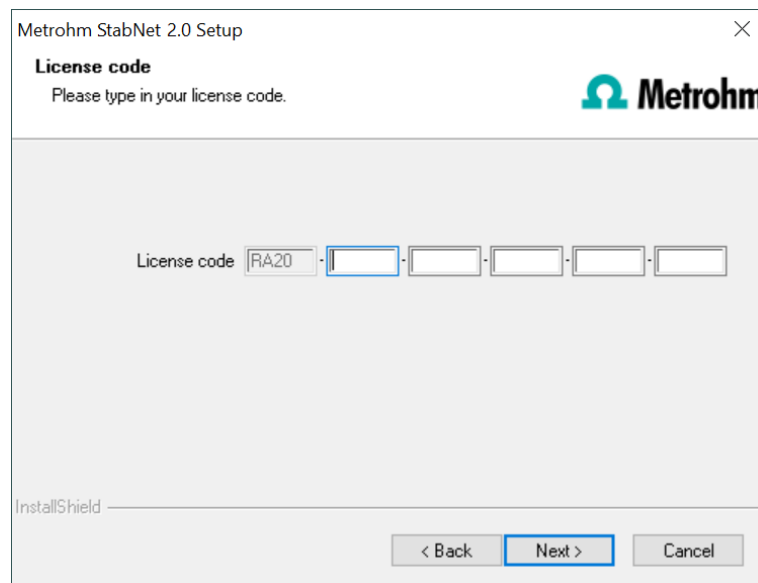
- 2 Connect the USB flash drive with the **StabNet** installation file to the computer and start the **setup.exe** file.

If the minimum system requirements are not met (see above), a corresponding message appears. Click on **[Yes]** if you would like to install the program nonetheless.

Afterwards, click on **[Next >]**.

- 3 Read the license agreement for **StabNet** and accept it with **[Yes]**.

- 4 After having accepted the license agreement, a window will appear where you can enter the license code.



The screenshot shows the 'Metrohm StabNet 2.0 Setup' window. At the top, it says 'License code' and 'Please type in your license code.' The Metrohm logo is in the top right. Below, there is a license code input field with the text 'License code' followed by a series of boxes: 'RA20', a box with a blue border, and four empty boxes. At the bottom, there are three buttons: '< Back', 'Next >' (highlighted with a blue border), and 'Cancel'. The 'InstallShield' logo is visible in the bottom left corner.

Enter the license code for **StabNet Full** and then click on **[Next >]**.



NOTICE

If you have entered the license code of an update license, then the license code of the previous full version will additionally be requested.

- 5 Confirm the target folder for the **StabNet** installation with **[Next >]** or select a different target folder with **[Browse...]**.
- 6 You can define the paths for the database files and default backup files in the **Additional installation information** window:

Metrohm StabNet Setup

Additional installation information.
Please enter the necessary information for the operation.

Every user needs read/write rights for the specified directories!

Database path: C:\ProgramData\Metrohm\StabNet Daily\Data

Default backup path: C:\ProgramData\Metrohm\StabNet Daily\Backup

Advanced...

InstallShield

< Back Next > Cancel



NOTICE

The default paths are different for the various operating systems.
The database path must not be on a network drive.
The default backup path may also be on a network drive.

You can change the ports **StabNet** uses to communicate with the database server and the administration server with the **[Advanced...]** button. If the ports are already used, an appropriate error message will appear. Ask your system administrator for more information about this. Continue with **[Next >]**.

- 7 If you would like to create a shortcut on your desktop to start the **StabNet** software, activate **[Yes]** and then click on **[Next >]**.

Metrohm StabNet Setup

Start icon

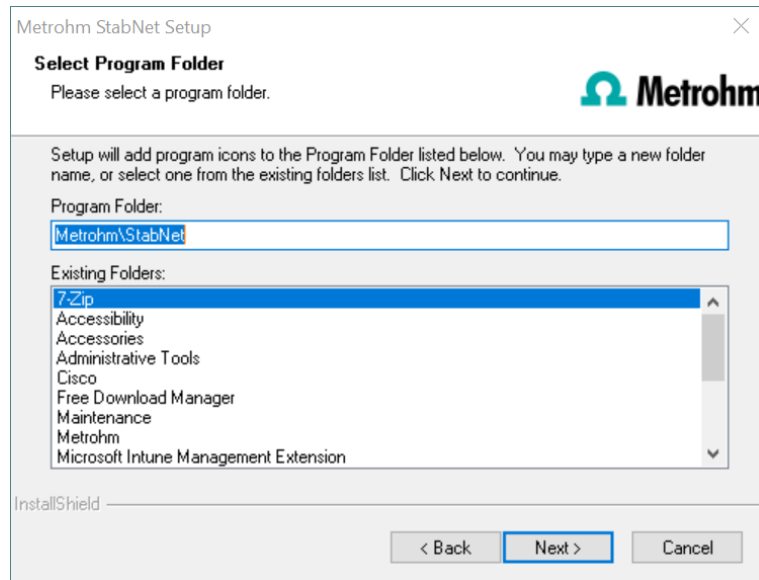
Should a shortcut be created on the desktop?

☒ Yes
☐ No

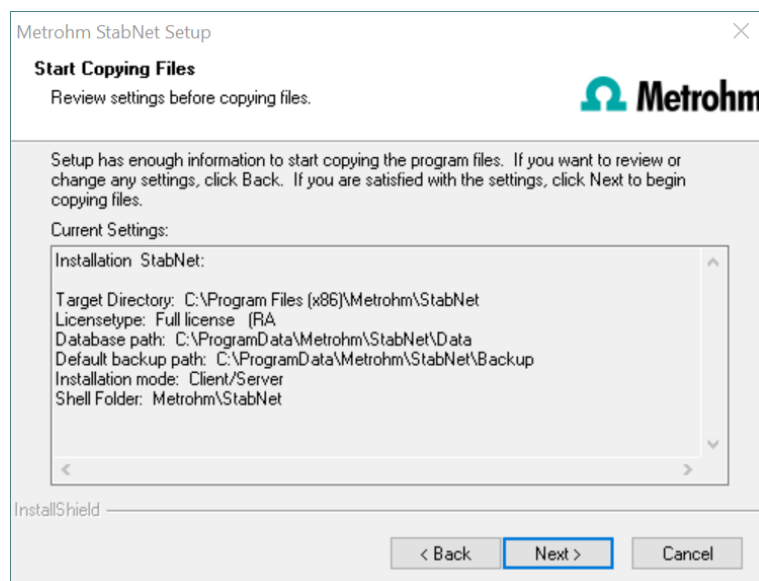
InstallShield

< Back Next > Cancel

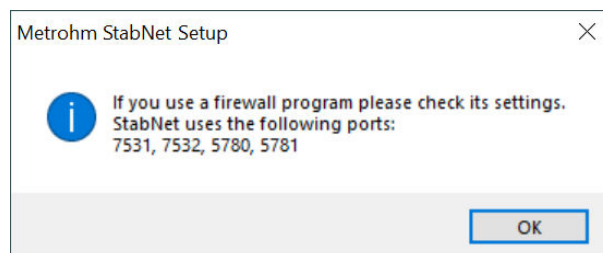
- 8 Confirm the program folder with **[Next >]** or select a different program folder.



- 9 The installation settings can now be checked. Start the copy process with **[Next >]**.



- 10 The following message appears during the installation of **StabNet**:



This message points out again which ports **StabNet** uses. Write down these ports and inform your system administrator in case **StabNet** is not able to connect to the database. Confirm the message with **[OK]**.

StabNet will now be installed.



NOTICE

During the installation, all device drivers that are required for controlling the supported USB devices are installed or updated.

Anti-virus programs can prevent the unpacking of the device drivers. If an error occurs, exclude the installation pathway for StabNet from the virus scan.

If the driver software needs to be updated, a message appears. Confirm the installation by clicking on the **[Install]** button.

- 11** Once the copying procedure has been completed, you can make further workplace settings:

The option **This client ID must exist in the current StabNet system.** can only be activated if a database from a previous installation already exists or if you want to connect to a database server on another computer.

If you enable this option, then **StabNet** checks whether the identifier you have entered exists in the database. If this is the case, the identifier and all associated settings will be adopted. With this option, reinstalling a client is much easier.

Click on **[Next >]**. If the database ports are not available, an appropriate error message will appear and the installation will be canceled. In this case, check your server and firewall settings before installing the program again.

- 12** At the end of the installation, the file **info.txt** will be created. This file contains all relevant information concerning your current **StabNet** installation. Save this file on your hard drive for future reference and print it (add to installation qualification).



NOTICE

An **InstallLog** file can be found in the installation directory of **StabNet** under ...bin\InstallLog. It contains a listing of all files copied to your computer during the installation and a confirmation that the installation has been successfully completed.

- 13** Complete the installation with **[Finish]**.

If the OMNIS Software is already installed on the computer, restart the **Metrohm OMNIS DeviceServer** service via the Windows Task Manager.

Fonts

For the correct display of East Asian fonts (e.g. in reports), it may be necessary to add the corresponding fonts. There are two options to do this. Carry out only one of the two described options.

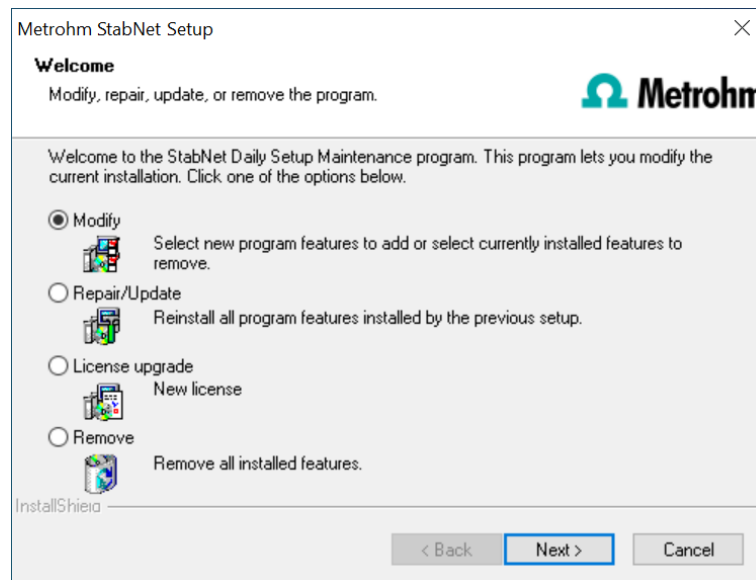
- Install the missing language: **Windows Settings ► Time & Language ► Language ► Add a language**
- Download the fonts for all languages: **Windows Settings ► Personalization ► Fonts ► Download fonts for all languages**

The procedure may differ from the described procedure, depending on the Windows version and operating system build used. Additional information on how to proceed can be found under [Language packs for Windows](#).

4 Modifying/repairing/removing the installation and upgrading the license

In order to carry out modifications on the current **StabNet** installation, start the **setup.exe** file from the USB flash drive or click under:

Control panel ► Programs ► Programs and Features on **Metrohm StabNet**. Then select **Uninstall/Change**:



Modify

With this option you can adjust the paths to the database and backup files and change the ports which **StabNet** uses for communication.

If the database path is changed, the existing databases are automatically copied to the new location.

Repair/Update

With this option you can **repair** an existing defective installation or **update** an older installation.

- **Repairing the installation**
In case of a defective **StabNet** installation because, for instance, a DLL file is missing or a program file has been deleted by mistake, **StabNet** can be repaired with this option.
- **Updating the installation**
In case an older version of **StabNet** is installed, it will be updated to the new version of **StabNet**.



CAUTION

During the updating of older StabNet versions to StabNet 2.0, the databases will be converted to the new version. Depending on the size of the database, this may take some time. A progress bar showing the status of the conversion is displayed for each database.

The computer must not be restarted or Windows shut down as long as the conversion is running!

Remove

This option removes your **StabNet** installation. Data which has been generated after the installation (e.g. database entries, log files, exported data, etc.) will not be deleted.

5 Program update with StabNet Full

During the program update, the configuration database (system configuration, methods, templates) and the determination databases are automatically updated for further use.

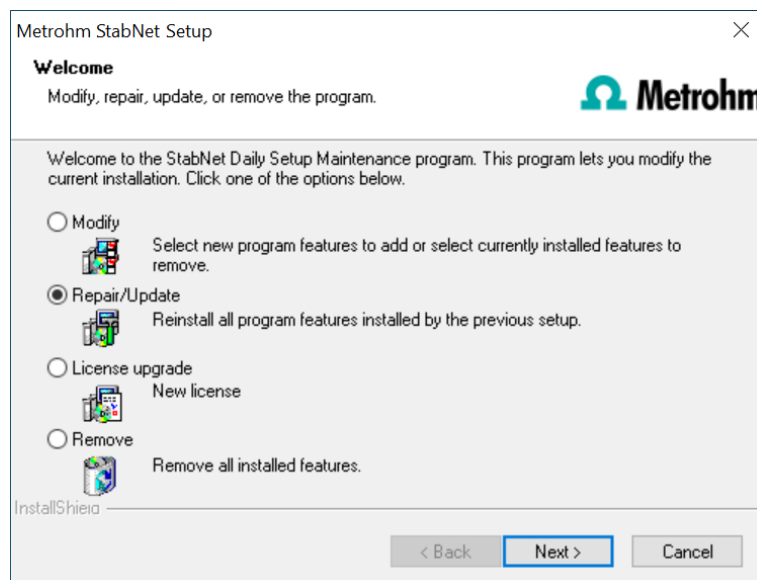


NOTICE

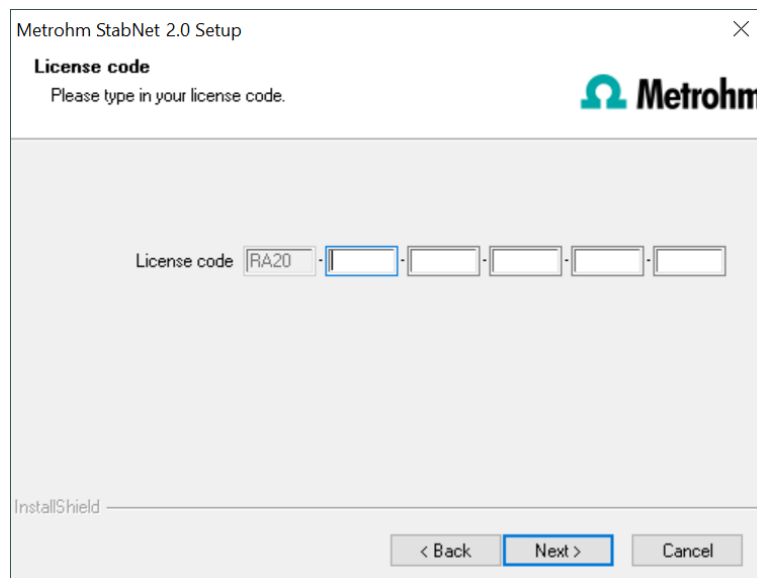
The files in the database and backup directory will be retained when the program is updated.

Files in the subdirectories **bin**, **jre**, **lib**, **res**, **doc** and **examples** will be overwritten by the update. The files in these directories which are not updated during the update will be deleted. The deleted files are listed in the **Install-Log**.

- 1 Save the configuration database to an external directory using the backup function of **StabNet**. In the **Configuration** program part, select the **File ► Backup ► Manually** menu item. Select **Backup directory**, enter a name for the backup file and click on **[Start]**. The backup is carried out. Then copy the backup file to an external storage medium.
- 2 If desired, export the methods in addition to the automatic backup with the configuration database (see above) into an external directory. In the **Method** program part, select the **File ► Method manager...** menu item. Select the desired **Method group**, mark all methods to be exported and click on **[Edit] ► Export....** Select the desired export directory and click on **[OK]**. The methods are exported to the desired directory. Then copy the method files to an external storage medium.
- 3 Save all determination databases created by you to an external directory using the backup function of **StabNet**. In the **Database** program part, select the **File ► Database manager...** menu item. Select the desired database and click on **[Backup]**. Select **Backup directory**, enter a name for the backup file and click on **[Start]**. The backup is carried out. Then copy the backup file to an external storage medium.
- 4 Also save further files created by you in the installation directory (e.g., export files) to an external directory or to an external storage medium.
- 5 Close **StabNet**. Connect the USB flash drive with the installation file to the computer and start the **setup.exe** file. Then select **Repair/Update program** and click on **[Next >]**.



6 Enter your update license code and click on **[Next >]**.



7



CAUTION

During the updating of older StabNet versions to StabNet 2.0, the databases will be converted to the new version. Depending on the size of the database, this may take some time. A progress bar showing the status of the conversion is displayed for each database.

The computer must not be restarted or Windows shut down as long as the conversion is running!

Complete the installation with **[Finish]**.

An **UpdateLog** file with a list of all files that have been copied to your computer during the program update and with a confirmation of a suc-

Successful installation is saved in the **StabNet** installation folder (default: C:\Program Files(x86)\Metrohm\StabNet) under bin\InstallLog.

6 User rights for StabNet

In order for the logged-in user to be able to access all functions with **StabNet**, the Windows system administrator must ensure that the permissions are set for the directories as listed below:

Directory	Permission	Group name or user name
Database directory Directory where the databases will be saved (...Data).	Modify	SYSTEM User*
Backup directory Directory where the backups will be stored (...Backup).	Modify	User*
%PROGRAMDATA%\Metrohm**	Modify	User*
Export directories Directories where the exported files are to be saved.	Modify	User*
PDF directories Directories where the PDF files are to be saved.	Modify	User*
Desktop	Modify	User*
Installation directory, e.g. %PROGRAMFILES(x86)%\Metrohm\StabNet	Read & execute	User*
Temp directory: %ALLUSERSPROFILE%\Metrohm\Temp\StabNet Directory where the temporary files are saved.	Modify	User*

* **User** = name of the user who is logged in

** During installation of **StabNet** the permission **Full Control** is set for the following groups: **SYSTEM, Administrators, Users, Guests, Main users**.



NOTICE

The **BackupServer.exe** process must be started for carrying out a backup (backup of the configuration database and of the determination databases). You can check this under "Windows Task Manager".

The **user** must be logged in during the whole backup process.